



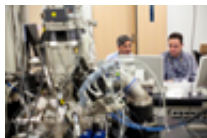
In this section

## Accreditations and Certifications

Unit	Program	Agency
<b>North Carolina Agricultural and Technical State University</b>	<i>North Carolina A&amp;T State University</i>	<i>Southern Association of Colleges and Schools (SACS)</i>
<b>Athletics</b>	<i>Athletics</i>	<i>National Collegiate Athletic Association (NCAA)</i>
	<i>Athletics</i>	<i>Mid-Eastern Athletic Conference (MEAC)</i>
<b>College of Arts and Sciences</b>	<i>Chemistry</i>	<i>American Chemical Society (ACS)</i>
	<i>Journalism and Mass Communication</i>	<i>Accrediting Council on Education in Journalism and Mass Communication (ACEJMC)</i>
	<i>Music</i>	<i>National Association of Schools of Music (NASM)</i>
	<i>Professional Theatre Acting and Technology</i>	<i>National Association of Schools of Theatre (NAST)</i>
	<i>Social Work/BSW</i>	<i>Council on Social Work Education (CSWE)</i>
	<i>Social Work/JMSW</i>	<i>Council on Social Work Education (CSWE)</i>
	<i>Visual and Performing Arts</i>	<i>National Association of Schools of Art and Design (NASAD)</i>
<b>College of Engineering</b>	<i>Computer Engineering and Computer Science</i>	<i>Accreditation Board for Engineering and Technology (ABET)</i>
	<i>Engineering (excludes Computer Engineering and Computer Science)</i>	<i>Accreditation Board for Engineering and Technology (ABET)</i>
<b>School of Agriculture and Environmental Sciences</b>	<i>Agribusiness, Applied Economics and Agriscience Education</i>	<i>United States Department of Agriculture/Cooperative State Research, Education and Extension Service (USDA/CSREES)</i>
	<i>Human Environment and Family Sciences</i>	<i>American Association of Family and Consumer Sciences (AAFCS)</i>
	<i>Landscape Architecture</i>	<i>Landscape Architectural Accreditation Board (LAAB)</i>

	<i>Nutrition/Dietetics Education (Didactic Program in Dietetics)</i>	<i>American Dietetic Association (ADA) Commission on Accreditation for Dietetics Education (CADE)</i>
<b>School of Business and Economics</b>	<i>School of Business and Economics</i>	<i>Association to Advance Collegiate Schools of Business (AACSB International)</i>
<b>School of Education</b>	<i>Human Development and Services (Counselor Education; HR Community/Agency Counseling)</i>	<i>Council on Accreditation for Counseling &amp; Related Educational Programs (CACREP)</i>
	<i>Human Development and Services (Rehabilitation Counseling)</i>	<i>Council on Rehabilitation Education (CORE)</i>
	<i>North Carolina Teaching Fellows</i>	<i>NC Teaching Fellows Commission</i>
	<i>Teacher Education Programs (university-wide)</i>	<i>National Council for Accreditation of Teacher Education/State Department of Public Instruction (NCATE/SDPI)</i>
<b>School of Nursing</b>	<i>School of Nursing link to</i>	<i>National League for Nursing Accreditation Commission (NLNAC)</i>
<b>School of Technology</b>	<i>School of Technology</i>	<i>Association for Technology, Management and Applied Engineering), formerly NAIT (National Association of Industrial Technology (ATMAE)</i>
	<i>Construction Management</i>	<i>American Council for Construction Education (ACCE)</i>

## POINTS OF PRIDE



The College of Engineering ranks No. 1 for the number of degrees awarded to African Americans



U.S. News and World Report ranks the COE in the top third of the Best Undergraduate Engineering Programs



N.C. A&T National Engineering Center (ERC)

**MAPS + DIRECTIONS (.../ADMISSIONS/UNDERGRADUATE/VISIT-US/MAP-DIRECTIONS.HTML)**

[CONTACT \(../../FOOTER-NAVIGATION/CONTACT-US.HTML\)](#)

[OPPORTUNITIES \(../../HR/SEARCH-APPLY/INDEX.HTML\)](#)

[LEGAL INFORMATION \(../../LEGAL/INDEX.HTML\)](#)