

# 1 Introduction to the Internet

The World Wide Web allows computer users to locate and view multimedia-based documents.

The Internet is several decades old.

The World Wide Web started with work at CERN in 1990.

The first part of the course concentrates on technologies that reside on the *client side*.

The client side is the part of the application running on Web browsers.

Examples of such technologies are

(X)HTML

JavaScript

Dynamic HTML

The second part of the course concentrates on technologies that reside on the *server side*.

The server side is the part of the application that typically runs on heavy-duty computer systems where company Web sites reside.

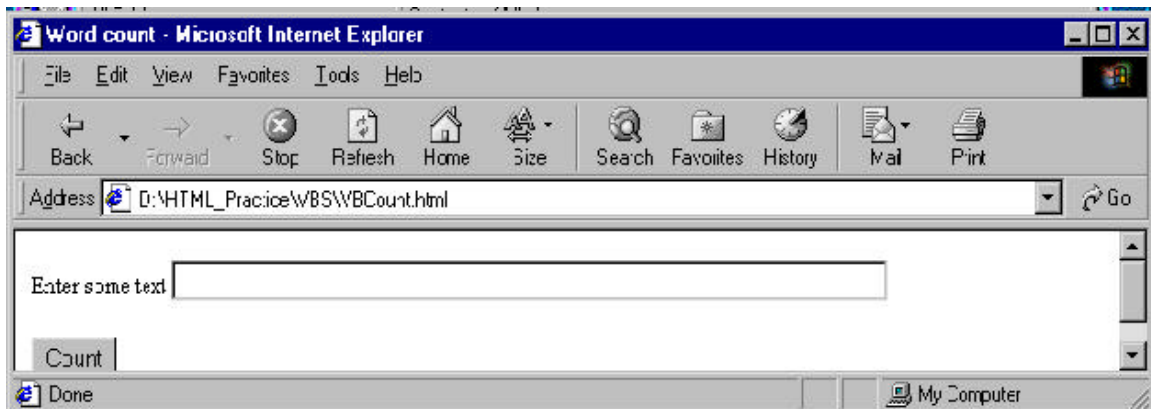
We'll cover two of the most popular paradigms for building the server side:

Perl/CGI

Microsoft's Active Server Pages (ASP)

We'll also cover XML

## Chapter 2 Microsoft® Explorer 5.5



**URL:** Uniform (or Universal) Resource Locator

A URL is displayed in the **Address** bar.

It describes the location of the file the browser is displaying or loading.

It usually begins with `http://` (Hypertext Transfer Protocol).

You can go to an new URL by overwriting the contents of the **Address** bar

- or by selecting on already visited page by clicking the arrow by the address bar
- or by clicking a *hyperlink (anchor)* in the browser window.

Exploit the history by

- using the **Forward** and **Back** buttons (perhaps repeatedly) or
- clicking the small down arrow by the **Forward** or **Back** button to select from a menu of the previous/last five URLs.

The interactive history bar is activated by clicking the **History** button on the toolbar.

It shows your history over the past 30 (default) days.

Autocomplete shows URLs in your history that match what you've typed so far.

Autocomplete also gives the option to remember some of your entries in forms.

Click **Refresh** to get the most recent version of a page that might be changed since it was cached.

A URL might be (besides a Web page)

- an *email address* – then it opens an email message to the specified recipient
- a *file* your browser *can't display* – then you're given the option to download it.

You can download all elements of a Web page.

*Image:* right click, choose **Save Picture As ...** or **Set as Wallpaper** (background for your screen).

*Code:* choose **Save As ...** .

## **Searching the Internet**

Search engines constantly explore the Internet and keep records of encountered sites.

You search their catalogs by going to a search engine.

Clicking the **Search** button on the toolbar gives a window where you select a topic.

You fill in the fields, and the results appear as hyperlinks.

Clicking **Next** invokes another search engine.

## **Online Help and Tutorials**

Clicking the **Help** button at the top gives options for

- a “tour”
- online help (“Contents and Index”)

## **Keeping Track of Your Favorite Sites**

Click the **Favorites** button in the toolbar to open a window to select a URL or

**Add to Favorites ...**

**Organize Favorites ...**

Clicking the **Favorites** button at the top pops up a menu with the same options.

## **FTP (File Transfer Protocol)**

This is for downloading files (e.g., programs to install).

An FTP site begins with `ftp://` .

You access an FTP site via a hyperlink or by typing its URL in the address bar.

FTP shows the contents of a directory.

Subdirectories are expanded by double clicking.

For a file, right-click its icon and choose **Save Target As ...** .

When you login on to an FTP site, IE5 sends your email address and your name (default: **anonymous**).

Restricted access sites request user name and password.

You can also upload a file to another location.